



# the **EASTERN ADVANTAGE**

Sealing Spiral Duct Systems Better...*Faster*



# REDUCE LABOR

Ductwork leakage is the single largest source of energy loss within a facility. Factory fabricated spiral duct systems leak far less than rectangular systems.

Eastern Sheet Metal custom manufacturers spiral duct systems and fittings. All spiral duct systems are designed with labor and energy saving solutions.

## Benefits of Spiral Duct Systems are:

- Nearly eliminates leakage at the seam and connections
- Ease of install reduces labor
- Weighs less and requires fewer connections
- Aesthetically pleasing



## The Eastern Advantage

Save labor time with the **Eastern Flange** and **EASTERN TIGHT™** and deliver a duct system free of leakage points.

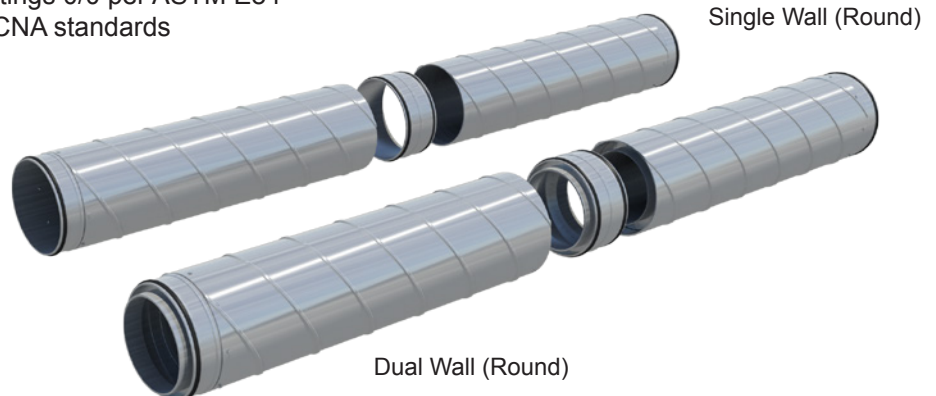
# EASTERN TIGHT

## Cut Sealing Time in Half

Using **EASTERN TIGHT** fittings will **reduce installation time** by **eliminating the need to seal** joints in duct systems - no sealer, no mess, and no added costs.

Instead, duct arrives at the job site with factory mounted rubber gaskets that provide a reliable, airtight seal.

- Eliminates costly sealer and leakage points
- SMACNA Class 3 Leakage standards for -2" w.g. to 10" w.g.
- Withstands temperatures -20°F to 212°F
- Smoke-developed and flame spread ratings 0/0 per ASTM E84
- Secure with #10 TEK screws per SMACNA standards



# EASTERN FLANGE

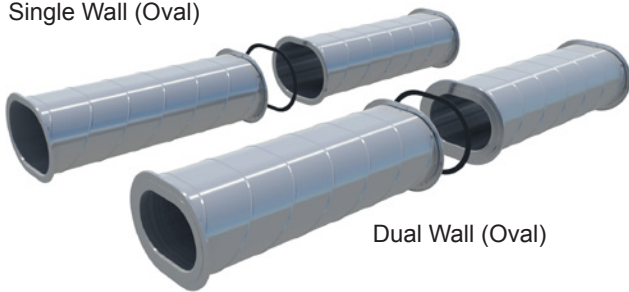
## Cut Install Time in Half

To save contractors valuable field installation time, the **Eastern Flange** is pre-assembled to spiral duct at the factory. Spot welds and any necessary sealing is already completed before it arrives at the jobsite.

A tight fit is essential to preventing leaks in duct. The Eastern Flange makes connecting duct systems quick.

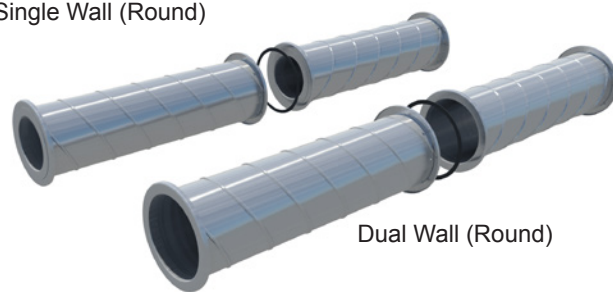
- SMACNA Class 3 Leakage standards for -2" w.g. to 10" w.g.
- Withstands temperatures -20°F to 212°F
- Smoke-developed and flame spread ratings 0/0 per ASTM E84
- Secure with self-tapping screws per SMACNA standards

Single Wall (Oval)



Dual Wall (Oval)

Single Wall (Round)



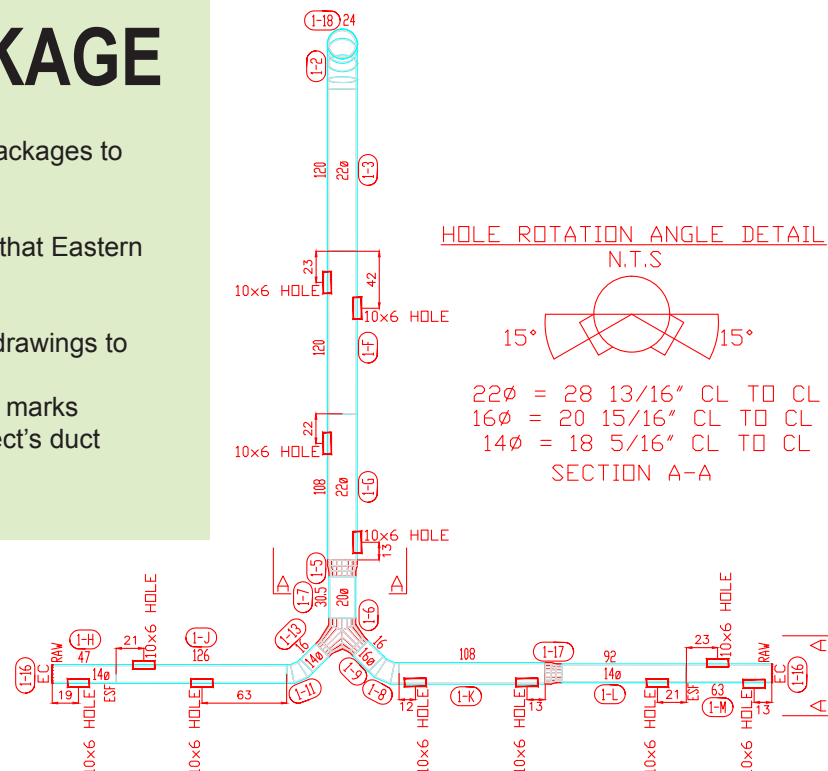
Dual Wall (Round)

## FULL SERVICE DRAWING PACKAGE

Eastern Sheet Metal provides drawing packages to help you get the job done faster!

It's simple and part of the expert service that Eastern Sheet Metal provides:

- Eastern Sheet Metal redraws project drawings to project standards
- New drawings are returned with piece marks showing location and size of the project's duct system



### HOLE ROTATION ANGLE DETAIL

N.T.S

15°

22φ = 28 13/16" CL TO CL

16φ = 20 15/16" CL TO CL

14φ = 18 5/16" CL TO CL

SECTION A-A

# the SPIRAL DUCT EXPERTS

The **EASTERN TIGHT**, **Eastern Flange**, and AMCA certified spiral duct are custom designed and factory made at the Cincinnati and Dothan facilities. This provides customers with **quicker response times** and **reduced project costs**.



**Cincinnati Headquarters and Plant**  
8959 Blue Ash Road  
Cincinnati, OH 45242  
P: (800) 348-3440



**Dothan Plant**  
1245 Ennis Road  
Dothan, AL 36303  
P: (334) 793-3440



- High-Performance Air Duct Systems
- Standard HVAC
- Sound Control
- Underground
- Fume Exhaust

EASTERN TIGHT is a trademark of Eastern Sheet Metal, LLC and may not be used without prior written authorization.